

LEGAL DESCRIPTION:

BEGINNING AT A POINT AT THE SOUTH EAST CORNER OF PROPERTY HEREIN DESCRIBED; SAID POINT OF BEGINNING BEING THE FOLLOWING COURSE AND DISTANCE FROM AN EXISTING CONCRETE MONUMENT LOCATED ON THE NORTH SIDE OF NEW YORK STATE ROUTE 109.

1) N07°42'41"W, 322.44 FEET.

THENCE THE FOLLOWING (3) THREE COURSES AND DISTANCES:

- 1) N70°02'28"W, 282.37 FEET.
- 2) N05°02'58"W, 64.25' FEET.
- 3) N74°07'23"W, 96.45' FEET.

RUNNING THENCE ALONG THE ARC OF A CURVE TO THE RIGHT HAVING A RADIUS OF 130.00 FEET AND A LENGTH OF 61.72 FEET.

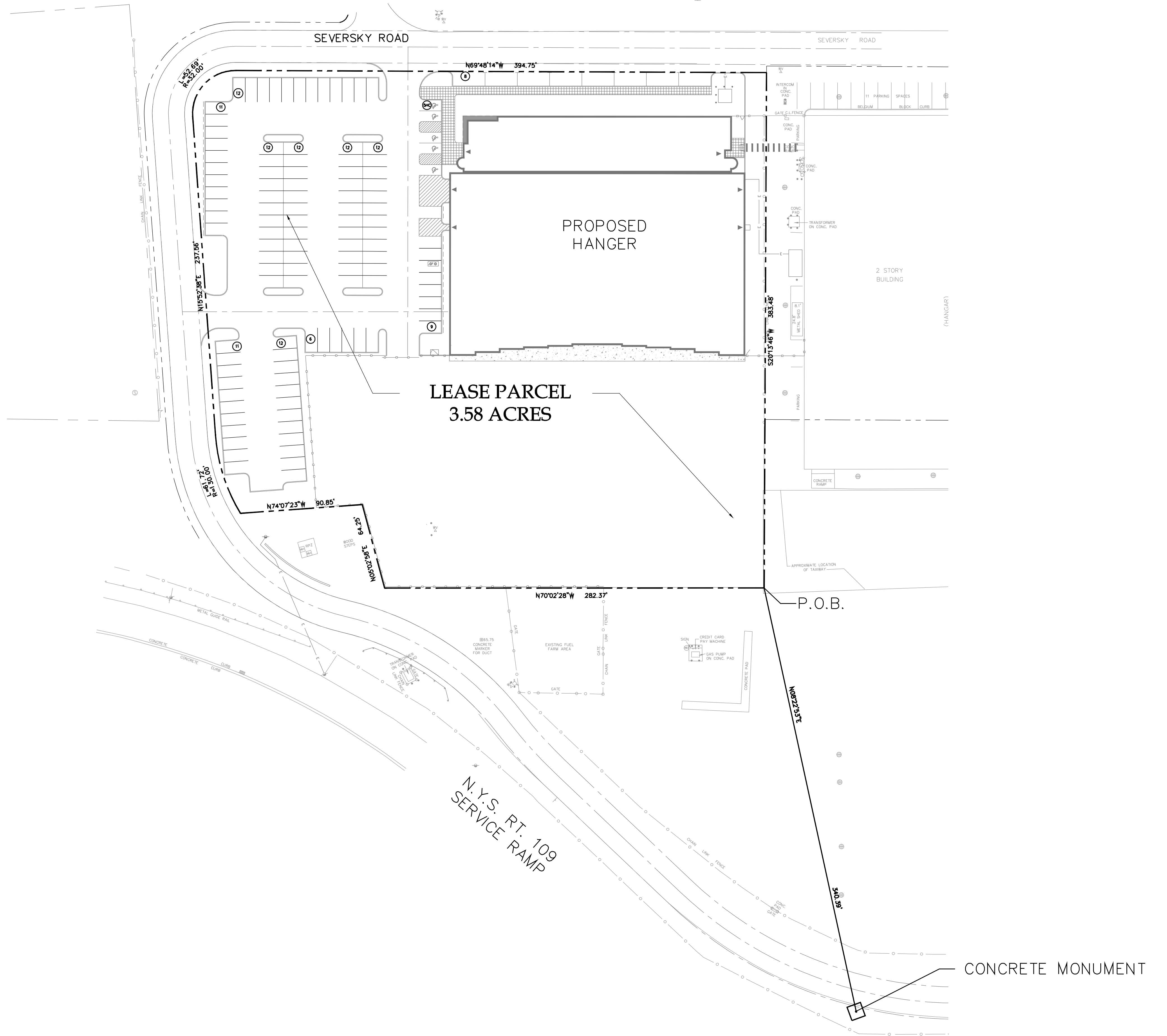
THENCE THE FOLLOWING COURSE AND DISTANCE:

1) N15°52'38"E, 237.56 FEET.

RUNNING THENCE ALONG THE ARC OF A CURVE TO THE RIGHT HAVING A RADIUS OF 32.00 FEET AND A LENGTH OF 52.69 FEET.

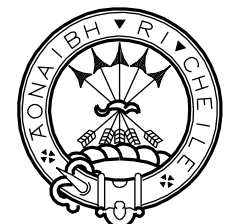
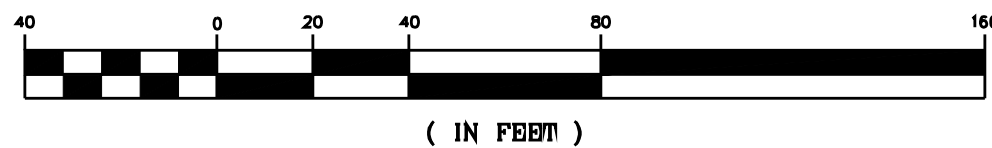
THENCE THE FOLLOWING (2) TWO COURSES AND DISTANCES:

- 1) S69°48'14"E, 394.75 FEET.
- 2) S20°13'46"W, 388.36 FEET TO THE POINT OR PLACE OF BEGINNING.



**PROPOSED LEASE EXHIBIT
FOR
STRATOSPHERE
DEVELOPMENT COMPANY
(A.K.A. TALON AIR)
REPUBLIC AIRPORT
EAST FARMINGDALE
SUFFOLK COUNTY, NY**

GRAPHIC SCALE



**CAMERON ENGINEERING
& ASSOCIATES, LLP**

100 Sunnyside Boulevard, Suite 100 330 Fifth Avenue, Suite 1300
Woodbury, NY 11797 New York, NY 10001
TEL: (516) 827-4900 FAX: (516) 827-4900 TEL: (212) 314-4000 FAX: (212) 461-3214

DECEMBER 19, 2007
SCALE 1"=40'
REVISED 4/18/08

